



ARABIAN CONSOLIDATED TRADING CRANE DIVISION

COMPANY PROFILE





TABLE OF CONTENTS

1. Transmittal Letter
2. Introduction
3. General Information
4. Vision, Mission and Core Competence
5. Capabilities
6. Experience and Performance
7. Equipment Details
8. Manpower Summary
9. Appreciation, Recognition and Awards
10. Organizational Chart
11. Health, Safety and Environment Plan
12. Location Map and Contacts



I am thankful to all my colleagues for making ACT a huge realization. Decades before, it was a dream and now it turned to a reality. The only witness and beneficiaries are all of you people. We never compromise with our vision, mission and some values on which we rely. We believe in commitment, loyalty, leadership, hard work. The management and the employees together made the ACT to be proud of. The appreciation from the existing customers is the best reward we can get and the best asset for the future growth. ACT wants to be different in the field through the services, we render. All the members of the ACT family are same and will be treated by the management with equal rights. We are also concerned about the safety and health of each and every member. We are trying to implement certain well efficient and effective policies to look after both, as they make the soul of ACT.

We welcome creative ideas from all the ACT members. Next dream of ACT is to achieve some world famous international standards. Like the corporate dream being realized, this will also be true only if we all take our part together. I hope ACT will definitely be achieving it in the near future. ACT can never go backwards, as I trust in the member's skill. The journey from 1983 to present day was full of challenges and we were able to meet all those timely and will be doing that for the future also.

Thank you

Hassan Mohammed Al-Naimi

President, ACT Group

TRANSMITTAL LETTER





Dear valued customers,

Arabian Consolidated Trading (ACT) is a 100 % Saudi multinational group of companies owned by Sheik Hassan Mahammad Al Naimi having its Head office in Support Industrial area in Al Jubail and branch office in Al Riyadh & Yanbu Al Bahr.

After his graduation from Riyadh University, Sheikh Hassan Mohammad Al Naimi started his own business in 1983 with 40 employees, for Trading and contracting activity.

In the year 1986 indentifying the huge potential in the booming Saudi market. Sheik Hassan Mohammad Al Naimi embarked on an expansion program opening up new business in the field of Heavy Equipment Rental he purchased Baldwin cranes represented by Mr. John Baldwin an UK based company structured ACT cranes & Heavy Equipment Rental Division. Then he entered JV leading American companies establishing a group of companies involved in a wide spectrum of activities including, Industrial Trading, cleaning equipment services, Medical Emergency Care unit., Lumber, construction and contracting, Tractor Division for sale of industrial equipment, Pallet plant manufacturing units in Al Jubail, Al Riyadh & Yanbu Al Bahr and crane and heavy equipment at Yanbu to cater to the requirements western province.

Today, the ACT group comprises a strong multinational task force of over 600 dedicated professionals. Under the dynamic leadership of its president, ACT group has an established base of branches within the kingdom and overseas offices in Dubai.

Arabian Consolidated Trading (Cranes, heavy equipment and stationary equipments), is the Crane & Heavy Equipment service providing arm for the ACT Group working as a partner in execution of projects and is a rental equipment provider for all its group of companies as well as a reliable local partner to provide equipment rental services to executes projects for all overseas principals ACT represents in the kingdom of Saudi Arabia.

With operations through-out the Kingdom and supported by Al Jubail head office, Arabian Consolidated Trading undertakes equipment rental for Cranes, Forklifts, Manlifts, Welding Machines Generators, Tower Lights, etc.



Arabian Consolidated Trading represents as a local business partner for Cranes & Heavy Equipment Rental services for following companies as below:

- *SADAF (Saudi petrochemical company)*
- *Petrokemya (Arabian Petrochemical Company)*
- *Kemya (Al- Jubail Petrochemical Company)*
- *Jubail United petrochemical company*
- *Hadeed (Saudi Iron and steel Company)*
- *Sharq (Eastern Petro chemical Company)*
- *Ibn Sina (National Methanol Company)*
- *Sharq (Eastern Petro chemical Company)*
- *Saudi Kayan Petro chemical Company*
- *Ar razi (Saudi Methanol Company)*
- *Ibn Zahr (Saudi European Petrochemical Company)*
- *SAFCO (Saudi Arabian Fertilizer Company)*
- *Ibn Al- Baytar (National Chemical Fertilizer)*
- *Sahara Petro chemicals*
- *Saudi Chevron Philips (S- Chem)*
- *Sinopec E & C Middle East Ltd*
- *Olayan Descon Industrial Services*
- *Yanpet*
- *Ibn Rushd*
- *SAMREF*
- *Marafiq*
- *Crystal*
- *Luberef*
- *Rawabi Delma*
- *Petrol Steel*

ACT in addition to being the local representative works as a local partner for the entire above principals also services as equipment Rental organization for construction companies, and is a Global Contract Company for SABIC and its affiliates in the Kingdom of Saudi Arabia for over 13 years.

Arabian Consolidated Trading has the technical expertise, trained, experience and certified operators, Rigger and dedicated backup service by qualified technician and logistic support (through its network of branches) to provide quality service support, commitment and lifting solutions to suit your requirements tailor made by our diligent and highly professional team for medium to large size construction projects.



As part on its ongoing commitment, ACT continues to develop and enhances its Quality Assurance / Quality Control and HSE policies and system to match global industry standards and to keep itself on cutting edge of industrial market.

ACT with its ISO 9001:2008 certification, rich professional management and highly trained experienced professionals endeavors to serve and service and satisfy its costumers to the optimal and achieve par excellence through quality service, commitment and to be recognized by our clients as the most reliable equipment rental organization.

Satisfying customer needs for their Heavy Lift requirements is our motto.

We would appreciate the opportunity to discuss your requirements and wish to inform you that we are very keen to work with you and thereby enclosing our prequalification documents for your review and kind consideration.

We would be pleased to provide clarifications (if required) or furnish any additional information that you may require and you can be rest assured of our fullest support, quality services and total commitment at all times.

Assuring you the best services,

Thanks and regards,

For Arabian Consolidated Trading,

Mohammad Hassan Al Naimi

Vice President, ACT Group



ACT Cranes

ARABIAN CONSOLIDATED TRADING CRANE DIVISION

BRIEF INTRODUCTION ABOUT US



Brief Introduction About Us

We Arabian Consolidated Trading (ACT Crane & Heavy Equipment) is a reputed and organized company in the Kingdom of Saudi Arabia established in 1986 based in Jubail Industrial City, with a branch in Yanbu Al Bahr established in 2006 located in Industrial city to cater to the requirement of western province.

“A Trusted Name in Equipment Rental” we are highly specialized in supply of Mobile Cranes with various capacities ranging from 25 Ton to 1200 Ton (biggest Mobile Crane in the Kingdom of Saudi Arabia) Heavy, Mobile & Stationary Equipment like Forklifts, Man lifts, Tele-Handlers, Air Compressors, Welding Machines, Generators, Tower Lights etc., to suit the customer's needs. Also we have the service of level 3 Riggers, expert from Germany.

Since throughout our service, we have involved in the development of Petrochemical Industries and other Infrastructure developments as we contribute to the growth of the nation along with the citizens. We continue to incorporate new ideas and modernization efforts, whilst drawing simultaneously on the experience, industry knowledge and customer loyalty build up over the years.

ACT Group of Companies is involved in a wide spectrum of activities including, Industrial Trading, Industrial Cleaning Equipment Services, Lumber & Plywood supply, Construction & Contracting, Tractor Division for sale of Industrial Equipment, Pallet Plant Manufacturing Units in Jubail, Riyadh & Yanbu, ACT Medical Division (ACT Lifecare, ACT Pharmacy, Medical Equipment).

A.C.T. Stands in the market active and have a build up reputation and are holding ISO 9001:2008 certification for Cranes and Heavy Equipment valid up to 2015, rich professional management experience & highly trained and experienced professionals endeavors to serve and satisfy its customers to the optimal and achieve par excellence through quality service equipment, commitment and to be recognized by our clients as the most reliable equipment rental organization.

Today the A C T group comprises a strong multi-national task force of over 600 dedicated professional under the dynamic leadership of its President Mr. Hassan Mohammad Al Naimi. A C T has an established base of over 05 branches within the kingdom and overseas offices in Dubai.

Our Policy

Our Policy is to work with our clients providing solutions and consistency of quality services, which helps us to remain the most dependable source in this industry.

We aim to project and procure only high quality equipment from reputed manufacturers and back the same with qualified and skilled maintenance team of Engineers and Technicians and maintain adequate necessary spare parts stock for emergency breakdowns.

As a Saudization Policy, we strictly follows the council of Ministry Decision 50 regarding the employment of Saudi Arabs in our workforce, Further being a 100 % Saudi owned company we are trying our maximum to increase the percentage of Saudi Nationals from time to time and also take adequate steps for Saudi tracing.

As part of its ongoing commitment, A C T continues to develop and enhance its Quality Assurance / Quality Control and HSE policies & system to match global industry standards and to keep itself on the cutting edge of industrial market.



GENERAL INFORMATION

Company Information:**Arabian Consolidated Trading
(Crane & Heavy Equipments)****Jubail Branch****Address:****P.O. Box 11506****Tareeq 114, Jubail Ind. Area****Telephone Number:****013-341-1317 / 341-1320****Extensions:****Operations – 306****Maintenance and Procurement – 307****Sales – 309 / 310****Accounts – 303 / 317****Safety – 312****Rigging – 313****Fax Number:****013-341-1357****E-mail:****crane@actgroup.com.sa****Address:****Yanbu Branch****P.O. Box 1685****Yanbu, Al Bahr****(Yanbu Branch)****Telephone Number:****014-325-4411****Fax Number:****014-325-4433****Email:****yanbucrane@actgroup.com.sa**

President	:	Hassan Mohammad Al Naimi
Vice President	:	Mohammad Hassan Al Naimi
Group General Manager	:	Vasudevan Kesavan
General Manager-Crane Division	:	Abdullah Salman Al Khaldi
Commercial Registration	:	2055001616

VISION, MISSION AND CORE COMPETENCE



Our Vision:

ACT aims to be the leader in the supply of quality engineered products and services, by continually improving our relationships with customers, employees and suppliers; promoting a healthy environment and providing our products at market prices, to be a cut above the rest and exceed our customer's expectations by abiding our core values. Customer's satisfaction is our motto.

Our Mission:

To be recognized by our clients as the most reliable Equipment Rental Company, by providing reliable and quality services to satisfy its customers and to achieve per excellence through quality service and commitment.

Core Competence:

Professionalism, Ethics, Integrity, Honesty and Commitment

Productivity derived from intellectually applied Technology and Human Insight

Vast Experience in the fields of Engineering and Industrial Services

Sound Technical and Financial Back-up

Complete range of services in Equipment Rental for Cranes ranging from 25 Tons to

Biggest Mobile Crane in the Kingdom i.e. 1200 Tons with a wide range of Stationary

Equipments i.e. Forklifts, Welding Generator, Tower Lights, Man Lifts & Tele-Handlers



ACT Cranes

ARABIAN CONSOLIDATED TRADING CRANE DIVISION

CAPABILITIES



Arabian Consolidated Trading (ACT), being a well reputed firm in the field of Equipment Rental with a sound financial background, we have the capability to meet the requirement of our clients positively.

On the base of strong platform with wide experience we are fully confident and capable to execute and perform any contract awarded to us smoothly with full back up facility, comply with the requirements and terms & conditions of the clients.

Through our available sources and contacts, we are in well position to purchase 100% brand new equipment within stipulated period as we have a standing contract with our manufacturers and equipment can be delivered within stipulated period if awarded a long term contract with your esteemed organization. Also we can assure the service engineers to attend in case of any major breakdowns immediately on site.

As remains a trusted name in the Heavy Lifting Industry and in view of our highly qualified and well experienced Engineers and Management professionals along with experienced workforce, we can assure you our best and prompt services At all times.





ACT Cranes

ARABIAN CONSOLIDATED TRADING CRANE DIVISION

EXPERIENCE AND PERFORMANCE



EXPERIENCE AND PERFORMANCE:

We have successfully completed a lot of projects with various clients around Eastern and Western areas of the Kingdom.

We are one of the Global Contractors of SABIC (Saudi Basic Industries Corporation) Since 1998 and the current contract is valid up to 2013.

We successfully handling all kind of jobs with Sabic affiliates including major turnaround / Shutdown works with trouble free lifting services under the three contracts categorized separately for:

S.No.	Clients	Description	Period
01	SABIC	Crane Rental	2014-2017
02	SABIC	Mobile Equipment Rental (Forklifts, Trailer, Trucks etc.)	2014-2017
03	SABIC	Stationary Equipments (Welding Machines, Air Compressors, Tower Lights, D.G. set etc)	2014-2017

Also we have valid contract with other major Petrochemical & Refining Companies like:

S. No.	Clients	Description	Period
01	Saudi Chevron	Equipment Rental	2015-2018
02	Sip Chem	Equipment Rental	2012 – 2015
03	Luberef	Equipment Rental	2013 – 2016
04	Natpet	Equipment Rental	2013 – 2016
05	Sahara Petrochemical	Equipment Rental	2013 – 2016
06	Advanced Petrochemical Co	Equipment Rental	2014 – 2016

Apart from above mentioned projects we have Valid Vendor Code for following major industries:



Saudi Basic Industries Corporation

Vendor No. 0000500760

Saudi Aramco

Vendor No. 10012096

Saudi Chevron Philips

Vendor No. 118666

Sahara Petrochemical

Vendor No. 100289

Advanced Petrochemical

Vendor No. 100991

Farabi Petrochemical Company

Vendor No. 100840

We have also performed job for PETRO-RABIGH around 18 months in 2008/2009 thru AIMS International as a sub-contractor with a capacity of cranes from 50 tons to 250 tons.

We pride itself on total commitment to safety, reliability and quality of service.

Our competitive edge lines in its experience, expertise and professional dedication to serve customers along with precise handling of any job.

EQUIPMENTS



Type of Equipment: Mobile Cranes

- All Terrain
- Rough Terrain

Capacity: 50 tons to 1200 tons

Quantity: 160+



Type of Equipment: Forklift

Capacity: 3 tons to 10 tons

Quantity: 82+



Type of Equipment: Trucks

Quantity: 15 +



Type of Equipment: Welding Machine

Capacity: 400 AMP to 600 AMP

Quantity: 350 +



Type of Equipment: Air Compressor

Capacity: 250 CFM to 750 CFM

Quantity: 120 +



Type of Equipment: Tower Lights

Capacity: 1500 RPM – 50 HZ

Quantity: 300 +



Type of Equipment: Trailers

- Lowbed Trailer
- Flatbed Trailer

Capacity: 30 Tons to 125 Tons

Quantity: 35 +



Type of Equipment: Boom Trucks

Capacity: 10 Tons to 15 Tons

Quantity: 15 +





MANPOWER SUMMARY

SKILLED TECHNICIANS		
SNO	DESIGNATION	NOS
1	Crane Operators and Forklift Operators	300
2	Structure Welder	3
3	Rigger (level 3)	15
4	Rigger (level 2)	17
5	Rigger (level 1)	10
6	Rigging Engineer	1
7	Drivers	25
8	Painters	3
10	Helper	10
11	Electrician	9
12	Mechanic	13

Supporting Staff		
SNO	DESIGNATION	NOS
1	Administration	37
2	Finance	5
3	Time Keepers	3
4	Security	12
5	Store	4
6	Office Boy	1
7	Cleaner	2

	Total Employees (Expatriates)	470
	Saudi Employees	81



ACT Cranes

ARABIAN CONSOLIDATED TRADING CRANE DIVISION

APPRECIATION, RECOGNITION AND AWARDS





الشركة السعودية العالمية للبتركيماويات
(شركة مساهمة سعودية)
Saudi International Petrochemical Company
(Saudi Joint Stock Company)

Certificate of Recognition

THIS CERTIFICATE IS GIVEN TO

ARABIAN CONSOLIDATED TRADING

IN RECOGNITION OF VALUABLE CONTRIBUTION AND COMMITTED SUPPORT DURING

SIPCHEM'S METHANOL PLANT SHUTDOWN, 17-31 OCTOBER 2005

ALI A. AL-KHARSHAT
MANAGER, PURCHASING &
MATERIALS

TINUS VAN ZYL
MANAGER, MAINTENANCE



ACT Cranes

ARABIAN CONSOLIDATED TRADING CRANE DIVISION

ابن سينا
ibn sina

National Methanol Company

MTBE Plant Turnaround - March 2005

Certificate of Appreciation

This is to Certify that

M/s. Arabian Consolidated Trading - Crane Hire Division
Has successfully completed the MTBE T/A in
meeting targets, safety, efficiently and quality.
Wishing ACT-Company, the success in their future projects.

Ali Al-Khalid
GM - Operation

Abdulrahman Al-Gharani
IBN SINA - President



ACT Cranes

ARABIAN CONSOLIDATED TRADING CRANE DIVISION



الصحراء للصناعات البتروليماويات
sahara petrochemicals

CERTIFICATE OF APPRECIATION

ARABIAN CONSOLIDATED TRADING

This certificate is hereby conferred to honor and recognize your outstanding contribution and support for plant emergency shut-down during Nov. – Dec. 2009



Abdulkarim Al-Sharafi
Manager,
Maintenance Department

28th February 2010

Date Issued



Saeed Bayounis
General Manager,
Maint. & Tech. Services



ACT Cranes

ARABIAN CONSOLIDATED TRADING CRANE DIVISION

سابك
sabik

صدف
saddaf

SAUDI PETROCHEMICAL COMPANY

Certificate of Appreciation

Is hereby given to

**For their excellent support for providing Cranes and
Lifting Services during 2006 Styrene II Turnaround**


**Abdulrahman Abdulah Al-Musairii
Operation Manager, EBS / CIE**

Date: 8/5/2006





**Ronald B. Ratgers
Manager, MT. Support Department**

Date: 8/5/2006



Saudi Petrochemical Company

This Certificate is issued to:

**ARABIAN CONSOLIDATED TRADING EST.
(ACT)**

In recognition for their valuable contribution to
the successful completion of SADAF T/A's
(STYRENE-II, EDC, SALT PLANT & UTILITIES)
which were accomplished safely.

2 August 2004

Date

Abdulrahman A. Al-Hammad
Manager Maintenance

Fahad M. Al-Sharef
General Manager - O&M

2/8/2004
[Signature]



ACT Cranes

ARABIAN CONSOLIDATED TRADING CRANE DIVISION

سابك
sabc

SAUDI BASIC INDUSTRIES CORPORATION
SAUDI PETROCHEMICAL COMPANY (SADAF)
CENTRAL MAINTENANCE DEPARTMENT - TURNAROUND SECTION

صدف
sadaif

award this
Certificate of Appreciation
to

ARABIAN CONSOLIDATED TRADING

As a gesture of appreciation to your efforts, commitment and dedication during the Salt Plant 2013 Turnaround. The Turnaround was completed without Recordable Incident or Lost Time Accident.

Given this 04th day of July 2013 at Saudi Petrochemical Company (SADAF), Al Jubail, Kingdom of Saudi Arabia.


SULTAN F. AL-QAHTANI
Acting - TA Leader / Planning Supervisor


MOHAMMED S. KHABTI
CMD - Manager

Chemistry That Matters



بتروكيميا
petrokemya

سابك
sabia

APPRECIATION CERTIFICATE

THIS CERTIFICATE IS AWARDED TO

M/S. ARAB CONSOLIDATED TRDG.

CONTRACTOR FOR ARABIAN PETROCHEMICAL COMPANY

" petrokemya "

IN RECOGNITION OF THEIR EMPLOYEES HAVING COMPLETED
ONE CALENDER YEAR 2004 WITHOUT ANY LOST WORK DAY INJURY
WHILE WORKING AT PETROKEMYA COMPLEX

DATE : 22/02/2005

Abdullah S. Al-Rabeeah

PRESIDENT



ACT Cranes

ARABIAN CONSOLIDATED TRADING CRANE DIVISION

سابك
sabc

SAUDI BASIC INDUSTRIES CORPORATION
SAUDI PETROCHEMICAL COMPANY (SADAF)
CENTRAL MAINTENANCE DEPARTMENT – TURNAROUND SECTION

صدف
sadaif

award this

Certificate of Appreciation

to

ARABIAN CONSOLIDATED TRADING

As a gesture of appreciation to your efforts, commitment and dedication during the Salt Plant 2013 Turnaround. The Turnaround was completed without Recordable Incident or Lost Time Accident.

Given this 04th day of July 2013 at Saudi Petrochemical Company (SADAF) , Al Jubail, Kingdom of Saudi Arabia.

SULTAN F. AL-QAHTANI

Acting - TA Leader / Planning Supervisor

MOHAMMED S. KHABTI

CMD - Manager

Chemistry That Matters



ACT Cranes

ARABIAN CONSOLIDATED TRADING CRANE DIVISION

سابك
sabic

SAUDI BASIC INDUSTRIES CORPORATION
SAUDI PETROCHEMICAL COMPANY (SADAF)
CENTRAL MAINTENANCE DEPARTMENT - TURNAROUND SECTION

صدف
sadaif

award this

Certificate of Appreciation

to

Arabian Consolidated Trading

As a gesture of appreciation to your efforts, commitment and dedication during the EDC 2013 Turnaround (May/June 2013). The Turnaround was completed without Recordable Incident or Lost Time Accident.

Given this 2nd day of September 2013 at Intercontinental Hotel, Al Jubail, Kingdom of Saudi Arabia.

في

AWADH J. AL-QAHTANI
Turnaround Manager

29/08/2013

MOHAMMED S. KHABTI
CMD - Senior Manager

CHEMISTRY THAT MATTERS™



سافكو
safco

Saudi Arabian Fertilizer Company

CERTIFICATE OF RECOGNITION

This certificate is awarded to:

Arabian Consolidated Trading – Cranes Division

In recognition of their outstanding contribution and commitment during

SF3 & SF2 Turnaround 2013

Abdulaziz, Abdulhameed Malik

Manager, TA Planning





ACT Cranes

ARABIAN CONSOLIDATED TRADING CRANE DIVISION

صدف
sadaif

SAUDI PETROCHEMICAL COMPANY (SADAF)
TURNAROUND DEPARTMENT

Certificate of Appreciation

is hereby awarded to:

ACT CRANES

In recognition of his valuable commitment and great contribution for the EBS-I 2015 Turnaround which was completed safely and successfully with zero recordable incident.

Issued date: 7th April 2015


ABDULHADI F. AL-KHALDI
Turnaround Sr. Manager


MOHAMMED A. AL-GHAMDI
General Manager Maintenance

مشروع مشترك لسابك وشركة شل كيميكايز أرابيا إل.إل.إس.سي
A SABIC & SHELL CHEMICALS ARABIA L.L.C. JOINT VENTURE



ACT Cranes

ARABIAN CONSOLIDATED TRADING CRANE DIVISION

سابك
sabic

SAUDI PETROCHEMICAL COMPANY (SADAF)
TURNAROUND DEPARTMENT

صدف
sadaif

award this

Certificate of Appreciation
to

ARABIAN CONSOLIDATED TRADING (ACT)

In recognition of your contribution during the MTBE 2014 Turnaround - Execution Phase.

Given this 7th day of January 2015 at Saudi Petrochemical Company.


ABDULHADI F. ALKHALDI
Turnaround Sr. Manager


MOHAMMED A. ALGHAMDI
General Manager Maintenance

“CHEMISTRY THAT MATTERS”

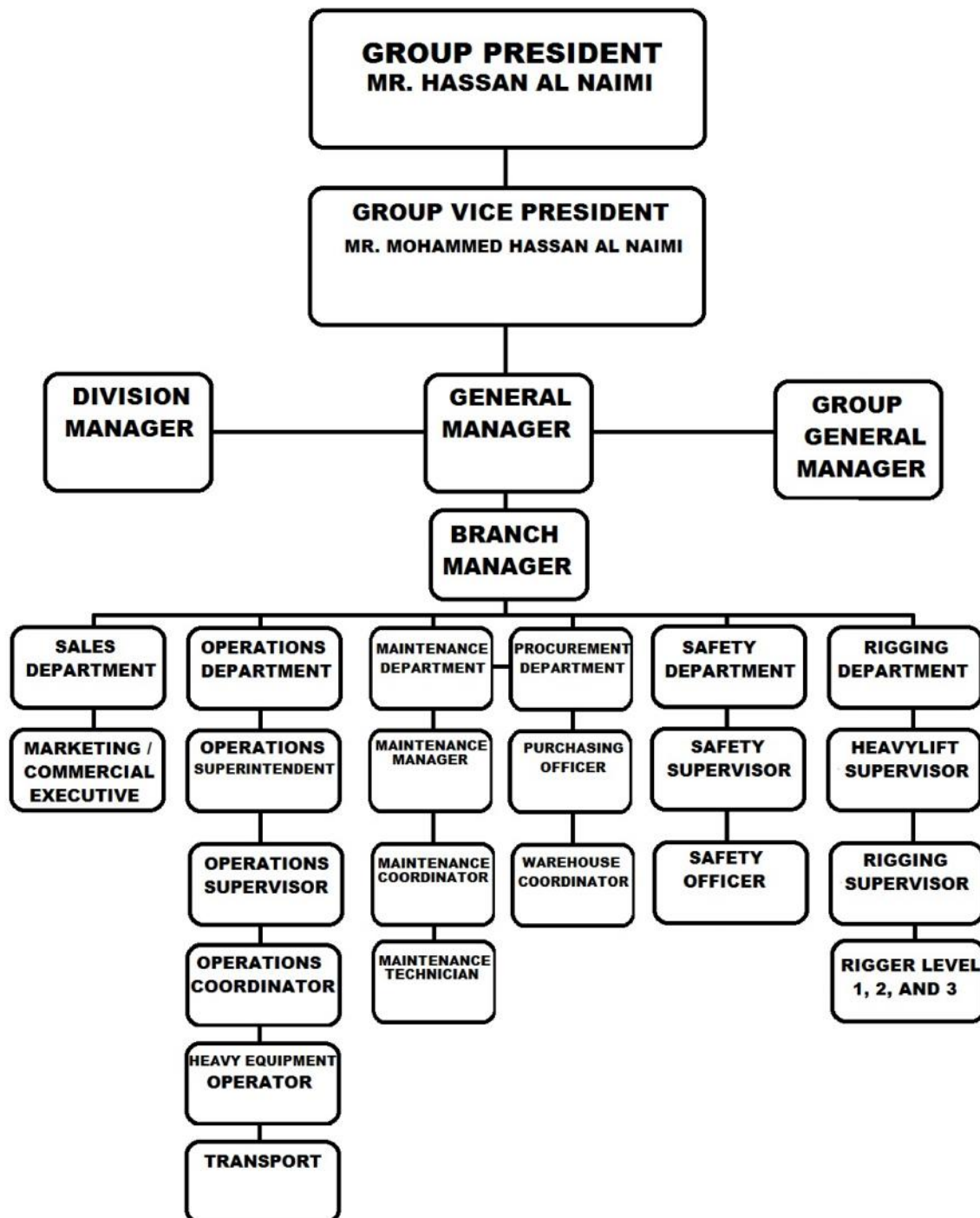


ACT Cranes

ARABIAN CONSOLIDATED TRADING CRANE DIVISION

ORGANIZATIONAL CHART





HEALTH, SAFETY AND ENVIRONMENT PLAN





HEALTH AND SAFETY POLICY



ACT Cranes & Heavy Equipment is committed to ensuring a safe and healthy work environment is provided and maintained for all personnel and minimizes impact on the local community.

ACT Crane & Heavy Equipment accepts responsibility for the effective implementation of this policy and will provide systems, training, supervision and visible support to ensure a safe work environment.

Line Management shall be responsible for the safety performance of activities within their area of responsibility and must accept that all safety health occurrences are preventable and continually aspire towards this. Acceptance of this responsibility is not negotiable.

All employees have responsibility to perform their duties in a manner which ensure their own safety and that of others.

To achieve this ACT Cranes & Heavy Equipment will:

- Formally assess health and safety in all construction activities and incorporate systems to eliminate or control hazards.
- Commit sufficient resources for the effective implementation of safety management systems in all areas of operation.
- Ensure all personnel are motivated, skilled, informed and resourced to carry out assigned work in a safe manner.
- Provide a continuous program of education and learning to enhance skills and increase health and safety awareness.
- Investigate, correct and report all safety and health occurrences.
- Audit and evaluate health and safety management systems and programs to continuously improve our safety performance.
- Provide an effective system of injury/illness rehabilitation management.
- Implement and maintain Client health and safety requirement.



ACT Cranes

ARABIAN CONSOLIDATED TRADING CRANE DIVISION

- Compliance with all statutory regulations.
- Engage competent subcontractors who will comply with required safety practices.

Mohammad Hassan Al Naimi

Vice President, ACT Group

Hassan Mohammad Al Naimi

President, ACT Group



ENVIRONMENTAL POLICY

ACT Crane & heavy equipment recognizes the principals of sustainable development and through the commitment and involvement of management and employees. It's dedicated to the provision of an environmentally responsible service to its customers, workforce and community.

The key environmental policy objectives are:

- Ensure compliance with and other applicable permits and its conditions.
- To conduct all operations in accordance with appropriate legislations.
- Prevent pollution.
- To establish environmental objectives and incorporate environmental management practices in project planning.
- To provide staff training to improve awareness and knowledge of environmental issues.
- To identify responsibility and allocation of resources to implement these policy objectives.
- To communicate constructively with costumers, workforce and community on the environmental effects of proposed project operations.
- To apply where practical waste minimization principles to project operations.

ACT Crane & Heavy Equipment supports environmentally sustainable practices including conservation of resources, emission control, protection of ecosystems and energy efficiency consistent with current technical knowledge and with a continuous process of up gradation of its personnel.

Mohammad Hassan Al Naimi

Vice President, ACT Group

Hassan Mohammad Al Naimi

President, ACT Group

SAFETY POLICY

A. Company Policy

ACT Group is dedicated to providing a safe and healthy work environment for all of our employees and customers. The Company shall follow operating practices that will safeguard employees, the public and Company operations. We believe all accidents are preventable. Therefore, we will make every effort to prevent accidents and comply with all established safety and health laws and regulations.



B. Management Commitment to Safety

Management is concerned about employee safety. Accidents, unsafe working conditions, and unsafe acts jeopardize both employees and Company resources. Injuries and illnesses result in discomfort, inconvenience and possibly reduced income for the employee. Costs to the Company include direct expenses (workers' compensation premiums, damaged equipment or materials, and medical care) and indirect expenses (loss of production, reduced efficiency, employee morale problems, etc.). These indirect costs are reported to cost 4-10 times more than the insured costs of an accident. Accordingly, Management will provide sufficient staffing, funds, time, and equipment so those employees can work safely and efficiently.

C. Assignment of Responsibilities

Safety is everyone's responsibility. Everyone should have a safe attitude and practice safe behavior at all times. To best administer and monitor our safety policies, the following responsibilities are delegated. This list should not be construed as all-inclusive and is subject to change as needed.



1. Management (will)

- a. Provide sufficient staffing, funds, time, and equipment so that employees can work safely and efficiently
- b. Demand safe performance from each employee and express this demand periodically and whenever the opportunity presents itself.
- c. Delegate the responsibility for a safe performance to the Safety Engineer, Supervisors, and Employees, as appropriate.
- d. Hold every employee accountable for safety and evaluate performance accordingly.
- e. Periodically review the Safety Program effectiveness and results.

2. Safety Engineer/Officer (will)

- a. Provide the resources, direction, and audits to integrate safety into the management system.
- b. Establish and maintain a safety education and training program.
- c. Periodically conduct safety surveys, meetings, and inspections.
- d. Advise supervisors, employees, and the safety committee on safety policies and procedures.
- e. Assure that all newly hired employees have been given a thorough orientation concerning the Company's Safety Program.
- f. Coordinate with Human Resources pre-employment physicals and maintain the company's drug-testing program.
- g. Prepare and maintain safety records, analysis, evaluations, and reports to improve the company's safety performance and comply with all government agencies, insurance carriers, and internal procedures.
- h. Work with management, supervisors, safety committees and employees to maintain and implement new and ongoing safety programs and comply with recommendations provided by outside consultants, OSHA inspectors, and insurance companies.
- i. Make available all necessary personal protective equipment, job safety material, and first-aid equipment.
- j. Review all accidents with management, supervisors, the safety committee and/or employees and ensure that corrective action is taken immediately.



k. File all workers' compensation claims immediately and work with the workers compensation carrier to ensure proper medical treatment is provided to injured workers and they are returned to work as quickly as medically possible.



3. Supervisors

Each employee, who is in charge of a specific work area, supervises the work of others, or to whom an employee is assigned for a specific task or project, is responsible and accountable for their safety. Supervisors will:

- a. Establish and maintain safe-working conditions, practices, and processes through:
 - Job Safety Analysis (see Return to Work section for sample)
 - Job Inspections
 - Safety Meetings
 - Safety Training
- b. Observe work activities to detect and correct unsafe actions.
- c. Ensure that all injuries are reported promptly and cared for properly. Make available first aid treatment.
- d. Investigate all accidents promptly. Complete an accident report and provide it to the safety engineer the same day the accident occurs. Review all accidents with the safety engineer and employees and correct the causes immediately.
- e. Assist Human Resources in the review of employment applications, pre-employment physicals reports, and personnel files to determine physical qualifications for specified job classifications.
- f. Seek out alternative work so that injured employees can return to work in a modified duty job.
- g. Consistently enforce safety rules/regulations, programs, and protective measures (i.e. use of personal protective equipment, machine guarding, proper clothing, etc.)

4. Employees

Each employee is responsible for his/her own safety. No task should be completed unless it can be completed safely. Employees will:

- a. Comply with all company safety programs, rules, regulations, procedures, and instructions that are applicable to his/her own actions and conduct.
- b. Refrain from any unsafe act that might endanger him/her or fellow workers.
- c. Use all safety devices and personal protective equipment provided for his/her protection.
- d. Report all hazards, incidents, and near-miss occurrences to their immediate supervisor or Safety Engineer, regardless of whether or not injury or property damaged was involved.
- e. Promptly report all injuries and suspected work related illnesses, however slight, to his/her immediate supervisor or Safety Engineer.
- f. Participate in safety committee meetings, training sessions, and surveys as requested and provide input into how to improve safety.
- g. Notify the Safety Engineer immediately of any change in physical or mental condition or use of prescription drugs that would affect the employees' job performance or the safety of him/herself or others.
- h. Notify the Human Resources Manager within five days of any serious driving, drug/alcohol, or criminal convictions.
- i. Be a safe worker on (and off) the job. Help coworkers do their job safely. Come to work every day with a safe attitude.

D. Accountability for Safety

Everyone is accountable for safety. Management, the Safety Engineer, and/or the Safety Committee will establish safety objectives and develop and direct accident prevention activities. All employees should strive to reach those objectives and will be evaluated accordingly. All managers' and supervisors' annual appraisals will include safety (results to objectives in their area and company wide) as well as an audit of their performance of their safety responsibilities. All employees' salary reviews will be affected by the company's safety performance record. Appraisals, which include safety records, will also be performed on all employees seeking a promotion.

E. Opinion Survey

The Company requests ongoing comments and feedback from all employees. In addition, annually the company will request all employees' opinions and input on the Company's safety program through an opinion survey. Be honest. You know your job better than anyone else. Therefore you can provide valuable input into performing the job safely. Changes to existing safety programs, rules, procedures, etc. may be influenced by your responses. Full cooperation of all employees is expected.





CONTACTS AND LOCATION MAP

Head Office – Al Jubail, Kingdom Of Saudi Arabia

P.O Box: 11506

Tareeq – 124

Jubail Industrial City 31961

Kingdom of Saudi Arabia

Tel: +966 3 341 6125/341 6194/341 6107, Fax: +966 3 341 6028

Email: admin@actgroup.com.sa

www.actgroup.com.sa

Crane Hire Division Jubail Industrial City

Tareeq – 114, Support Industry

Jubail Industrial City 31961

Kingdom Of Saudi Arabia

Tel: +966 3 341 1317/341 1320/341 2297, Fax: +966 3 341 1357

Email: crane@actgroup.com.sa

Crane Hire Division Yanbu Al Bahr

P.O Box: 1685

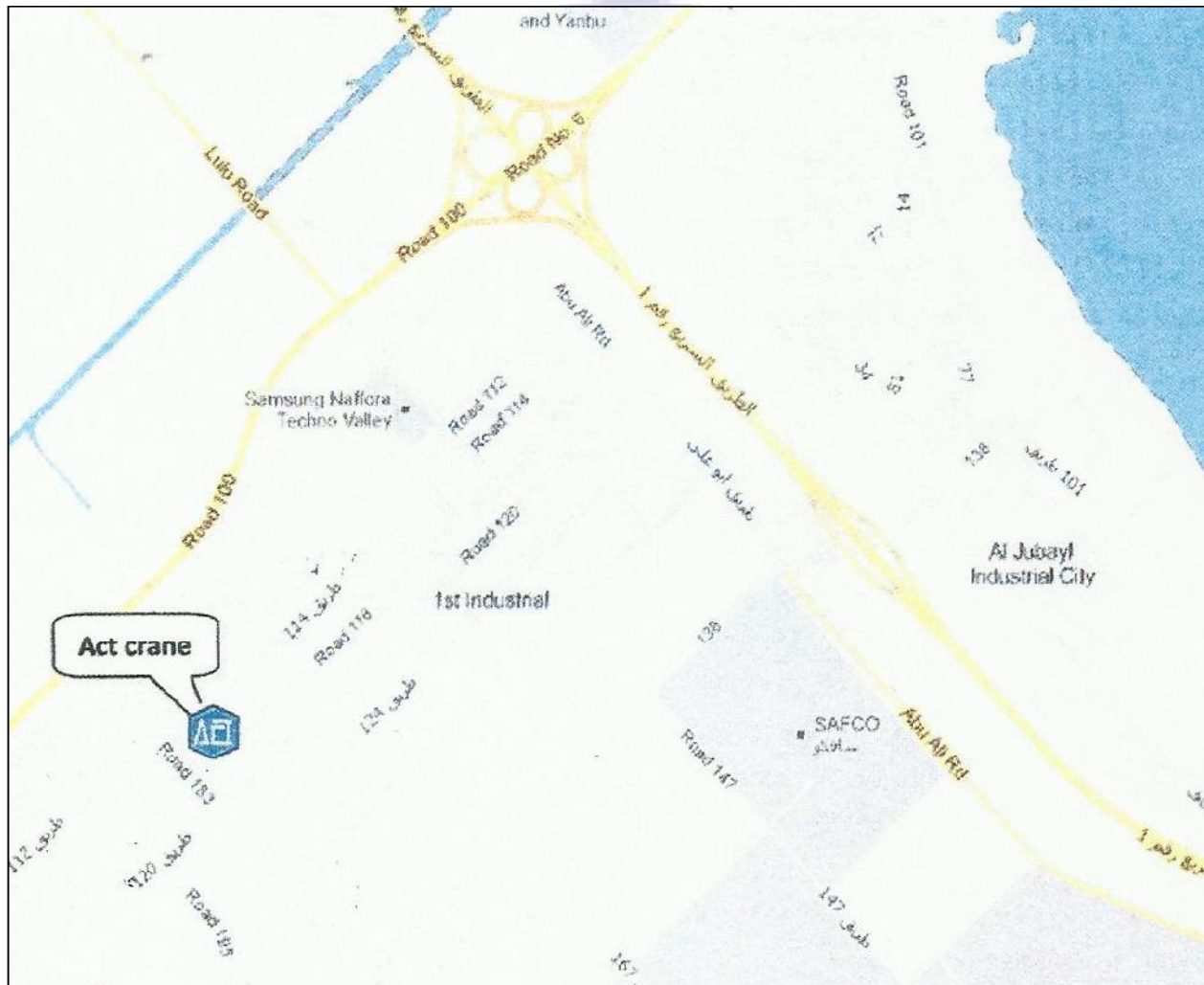
Yanbu Al Bahr

Kingdom Of Saudi Arabia

Tel: +966 4 325 4411/325 4422 Fax: +966 4 325 4433

Email: yanbucrane@actgroup.com.sa

ACT CRANE JUBAIL BRANCH LOCATION MAP





ACT CRANE YANBU BRANCH LOCATION MAP

